

# HUNTERS<sup>®</sup>

HERE TO GET *you* THERE



## 23 Odile Mews

Bingley, BD16 3QL

Offers In Excess Of £250,000

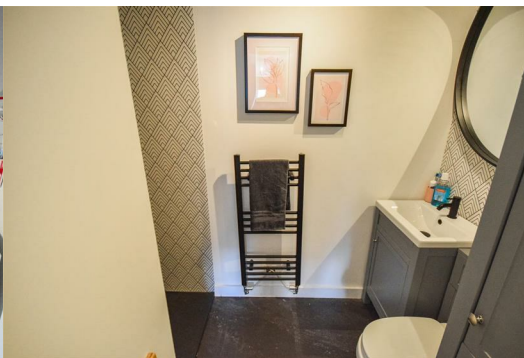


A magnificent extended three bedroom town house situated on a highly sought after residential development and ideally positioned for Eldwick Primary School, and the excellent village amenities.

Occupying a superb plot and indeed appealing to a wide variety of potential purchasers a viewing to a most impressive family home, does indeed come wholeheartedly recommended.

Comprising; entrance into entrance hall, cloakroom/WC, lounge with useful storage cupboard and extended family space to the rear and breakfast kitchen to the ground floor. To the first floor are three bedrooms with the master having contemporary en suite shower facilities and house bathroom. Externally are low maintenance gardens to the front and enclosed tiered gardens to the rear, parking and separate garage.

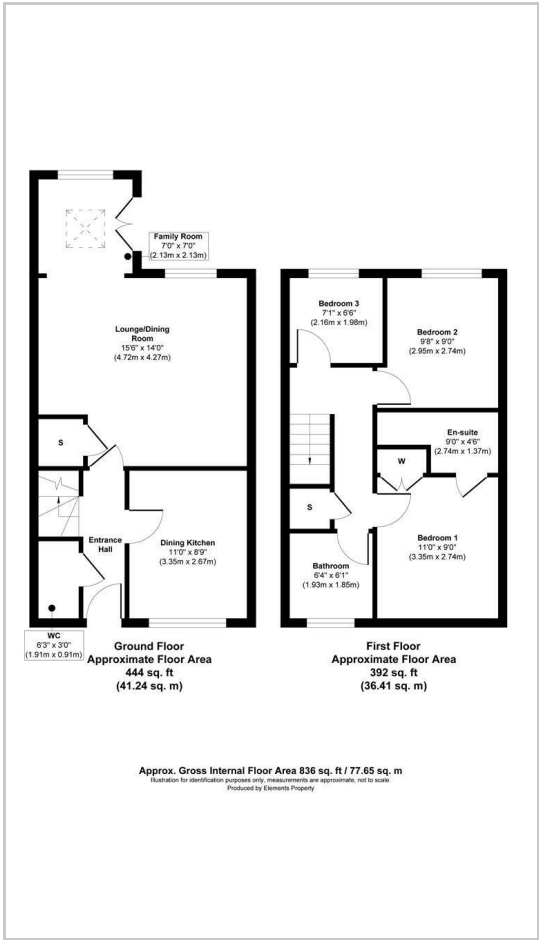
Viewing is considered essential to fully appreciate the attention to detail and quality of this impressive family home.



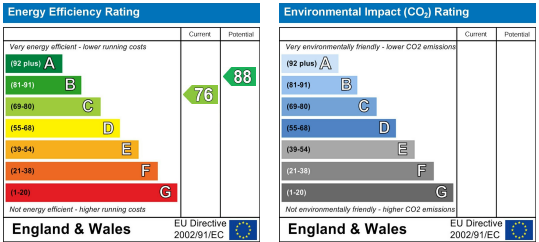
Area Map



Floor Plans



Energy Efficiency Graph



These particulars are intended to give a fair and reliable description of the property but no responsibility for any inaccuracy or error can be accepted and do not constitute an offer or contract. We have not tested any services or appliances (including central heating if fitted) referred to in these particulars and the purchasers are advised to satisfy themselves as to the working order and condition. If a property is unoccupied at any time there may be reconnection charges for any switched off/disconnected or drained services or appliances - All measurements are approximate.

**THINKING OF SELLING?** If you are thinking of selling your home or just curious to discover the value of your property, Hunters would be pleased to provide free, no obligation sales and marketing advice. Even if your home is outside the area covered by our local offices we can arrange a Market Appraisal through our national network of Hunters estate agents.